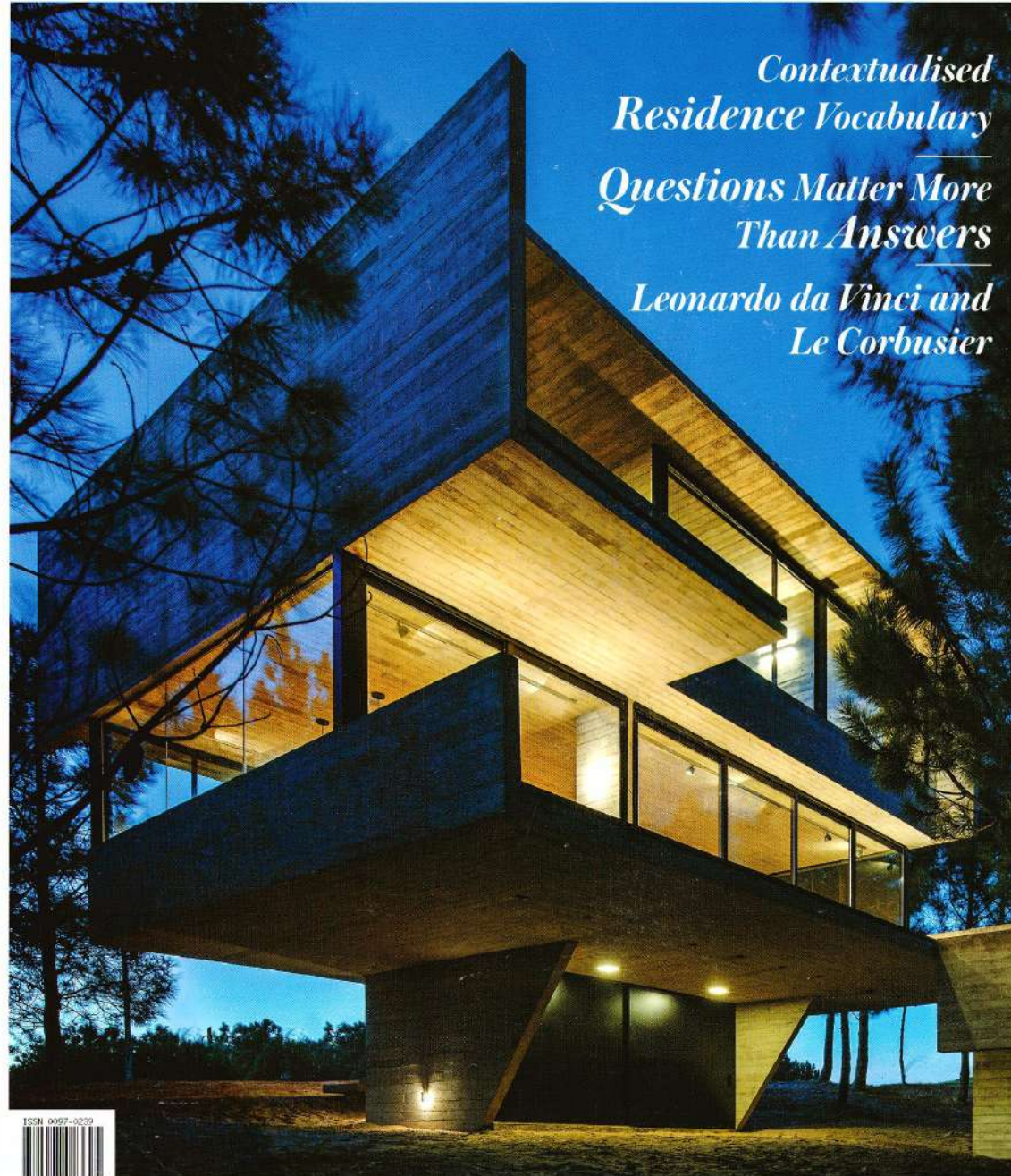


JANUARY 2020 ₹200

ARCHITECTURE+DESIGN

A N I N D I A N J O U R N A L O F A R C H I T E C T U R E

*Contextualised
Residence Vocabulary
Questions Matter More
Than Answers
Leonardo da Vinci and
Le Corbusier*



Healing through Light and Colours

Project: Yashoda Super Speciality Hospital & Cancer Institute, Ghaziabad
Architects: Studio An-V.Thot Architects Pvt Ltd, New Delhi



Ankita Sweety



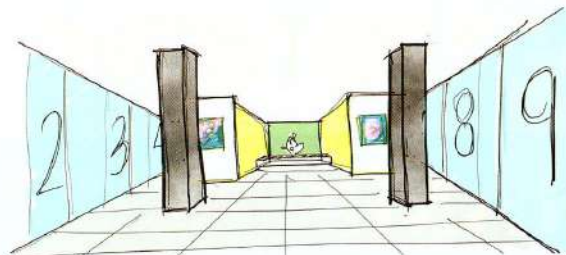
Pratyosh Chandan



FRONT ELEVATION



COURTYARD ON SECOND FLOOR

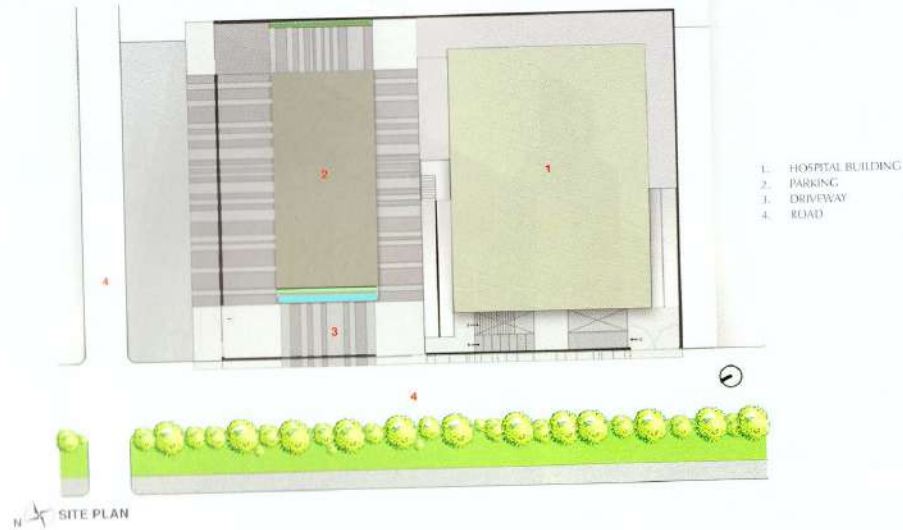


OPD CONSULTATION LOBBY



Standing tall, flaunting uninhibited strength underneath a cloak of simplicity, this healthcare facility is a result of a brief full of questions for its existence. While questions on physical identity, architectural presence and personality in context with locality routed the initial germs of facade development, patients and attendants care, progressive zoning, backend and forefront movement and a confident desire to heal through air, light, colours and nature guided the interior design development.

Located in the heart of Ghaziabad (UP), it is a 100-bedded facility, spread across seven floors with a total built-up area of 50,000sq ft. As one walks into the campus, a multilevel parking facility with a dab of yellow structural members and peripheral vehicular access in patterned flooring sets the stage for the hospital block standing as a monolithic structure of a single cuboidal volume. The facade is designed in layers of a variety of different shades of greys, accentuating horizontal lines to add depth



of character while the skin of these layers is designed with varying sunlight intake capacities depicting progressive zoning from the ground upwards with changing functional requirements. The materials used in doing so are a combination of exposed concrete, dark grey stacked slate stone, alu-minium composite panels and uniform series of glass panels. Adding a statement to this structure is a combination of an array of small square punctures guiding light routes, which are placed in a random pattern and interestingly run across the dark grey layer of the complete front side facade. This simplicity of randomness helps in developing curiosity in the onlookers while breaking the monotony of grey distributions. Intervals of wrought iron grillwork on the

VERTICAL ZONING

- Basement: Radixact Cancer Facility, Dialysis, Cafeteria, Out Patient Department, Waiting
- Ground: Diagnostics and Emergency + Mortuary
- First: Critical Care Floor: OT Complex, ICU, Labour Room, Neo-Natal ICU
- Second: Private rooms + Suites
- Third: Semi-Private rooms
- Fourth: General Wards, Chemotherapy Ward, In-house Kitchen + Dieticians Chamber
- Fifth: Administrative Block, Blood Bank, CSSD, Kitchen Store, Staff Changing

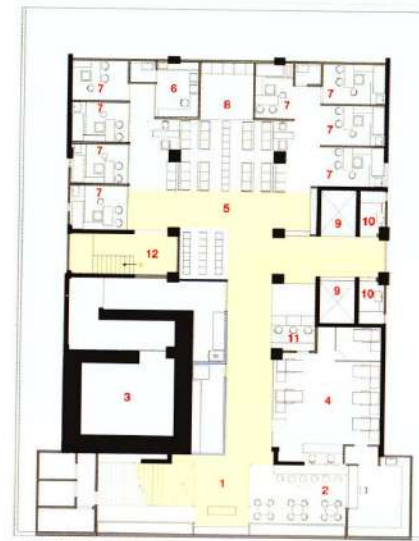


boundary wall also add to the character.

While planning, the segregation of spaces are done keeping in mind the progressive zoning as well as departmental interrelation while giving utmost importance to patient's and attendant's care through guided and uncluttered circulation.

The variety of materials that are in play with the

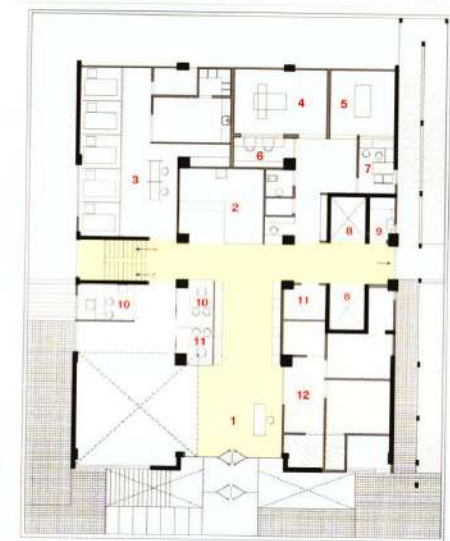
interiors are kept in sync with the overall composition. A combination of golden Emperor Italian stone, off-white and yellow corian, laminates, clear and lacquered glass, a combination of grid and gypsum ceiling and stretched fabric ceiling have been used along with a lot of colourful paintings to cheer up the atmosphere.



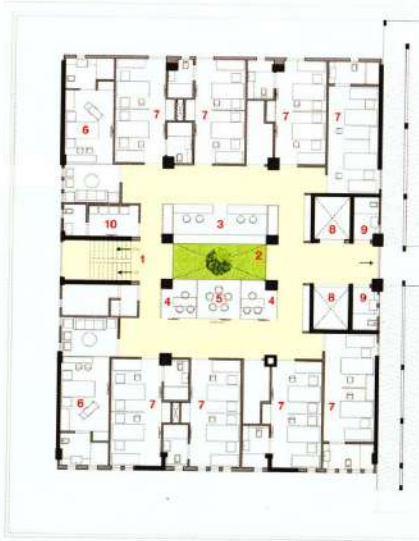
BASEMENT FLOOR PLAN

- | | |
|--------------------------|-----------------------|
| 1. HELP DESK /FOYER | 7. CONSULTATION ROOM |
| 2. CATERIA | 8. WORSHIP PLACE |
| 3. RADIOACT LAB | 9. LIFT |
| 4. DIALYSIS AREA | 10. PUBLIC WASHROOM |
| 5. WAITING LOBBY | 11. COPY BILLING AREA |
| 6. BLOOD COLLECTION ROOM | 12. STAIRCASE |

- | | |
|-----------------------|------------------------|
| 1. ENTRANCE | 7. RAUBER CONSULT ROOM |
| 2. PHARMACY | 8. LIFT |
| 3. EMERGENCY + TRIAGE | 9. PUBLIC WASHROOM |
| 4. CT SCAN LAB | 10. CONSULTANT ROOM |
| 5. X-RAY LAB | 11. BILLING AREA |
| 6. CONSOLE ROOM | 12. DIAGNOSTIC AREA |



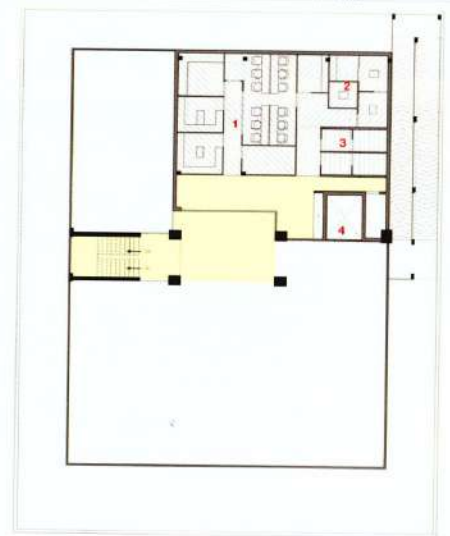
GROUND FLOOR PLAN



THIRD FLOOR PLAN

- | | |
|--------------------|--------------------|
| 1. FOYER | 6. PRIVATE SUITE |
| 2. COURTYARD | 7. DOUBLE ROOM |
| 3. NURSE STATION | 8. LIFT |
| 4. DOCTOR'S CABIN | 9. PUBLIC WASHROOM |
| 5. DISCUSSION ROOM | 10. STAFF ROOM |

- | |
|-------------------|
| 1. ADMINISTRATION |
| 2. CND |
| 3. SERVICES |
| 4. LIFT |



FIFTH FLOOR PLAN



SECTION



ELEVATION

A central open-to-sky courtyard on the second floor with lots of greenery brings a smile to one's face and helps in healing through positive energy. Pergolas above it are made through a combination of colourful hanging glass panels and MS cross sections creating a lightwell full of colourful shadows within the core of the hospital. An art room is placed adjacent to the courtyard where the patient can scribble with colours on a canvas. Such interaction of a patient with the light and shadows as well as colours becomes the highlight of the design concept. The concept is to heal through light and colours keeping the patients and

attendants utmost importance at its core. ✚

Photo credits: Aadit Basu, Places and Spaces

Facility

Principal Architects and Interior Designers: Ankita Sweetly, Pratyosh Chandan

Design team: Gaurav Chauhan, Abhishek Jain, Hina Sharma, Jitin Ahuja, Vivek Kumar Kohla, Ridhima Sharma, Tavleen Kaur, Shik Modi

Consultants: Space Designers (Structural), CESPL (MEP)

Built-up area: 50,000sq ft

Year of completion: 2019

